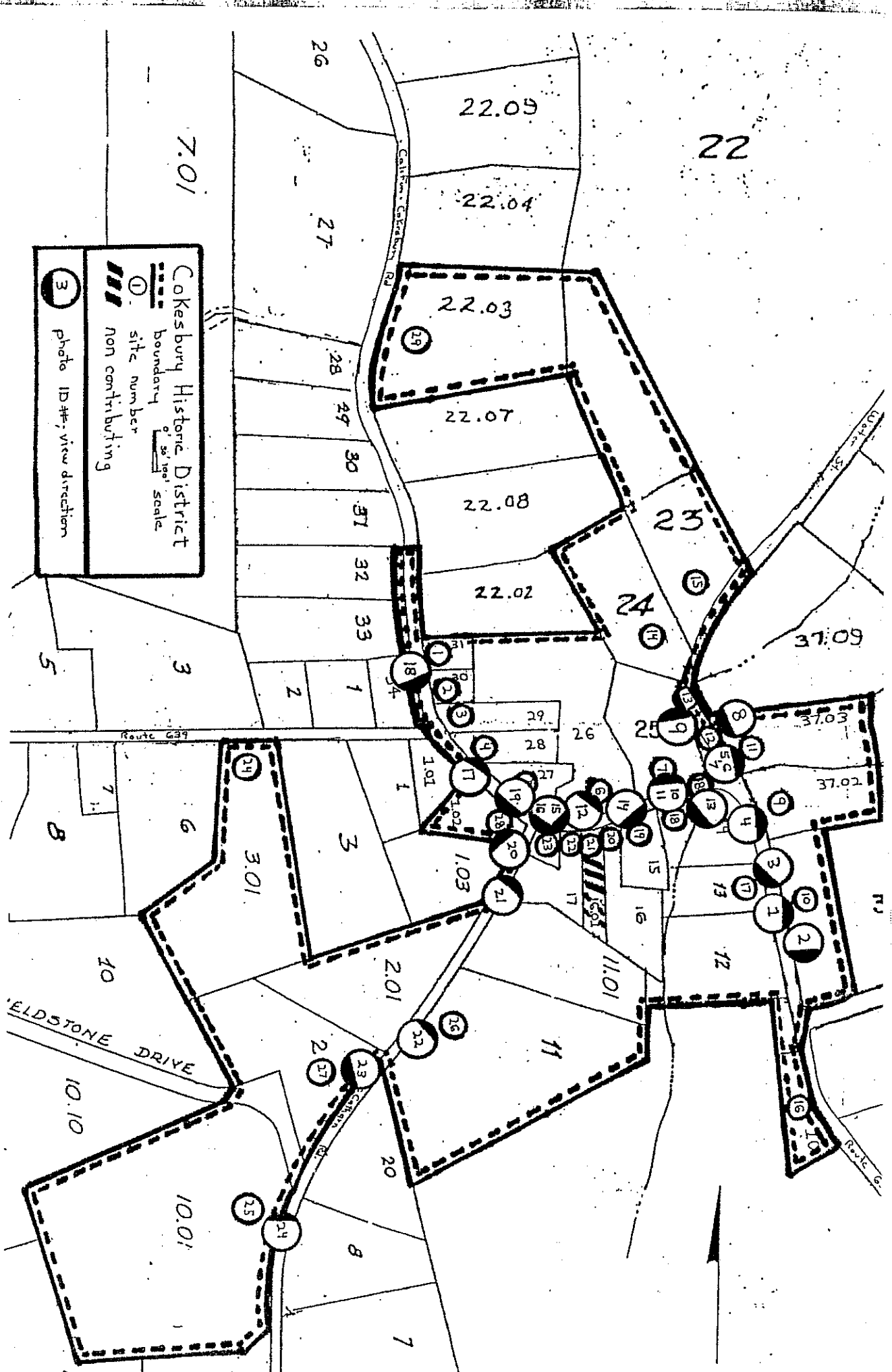


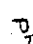
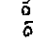


Cokesbury Historic District, Tewksbury & Clinton townships, Hunterdon County, NJ



Cokesbury Historic District

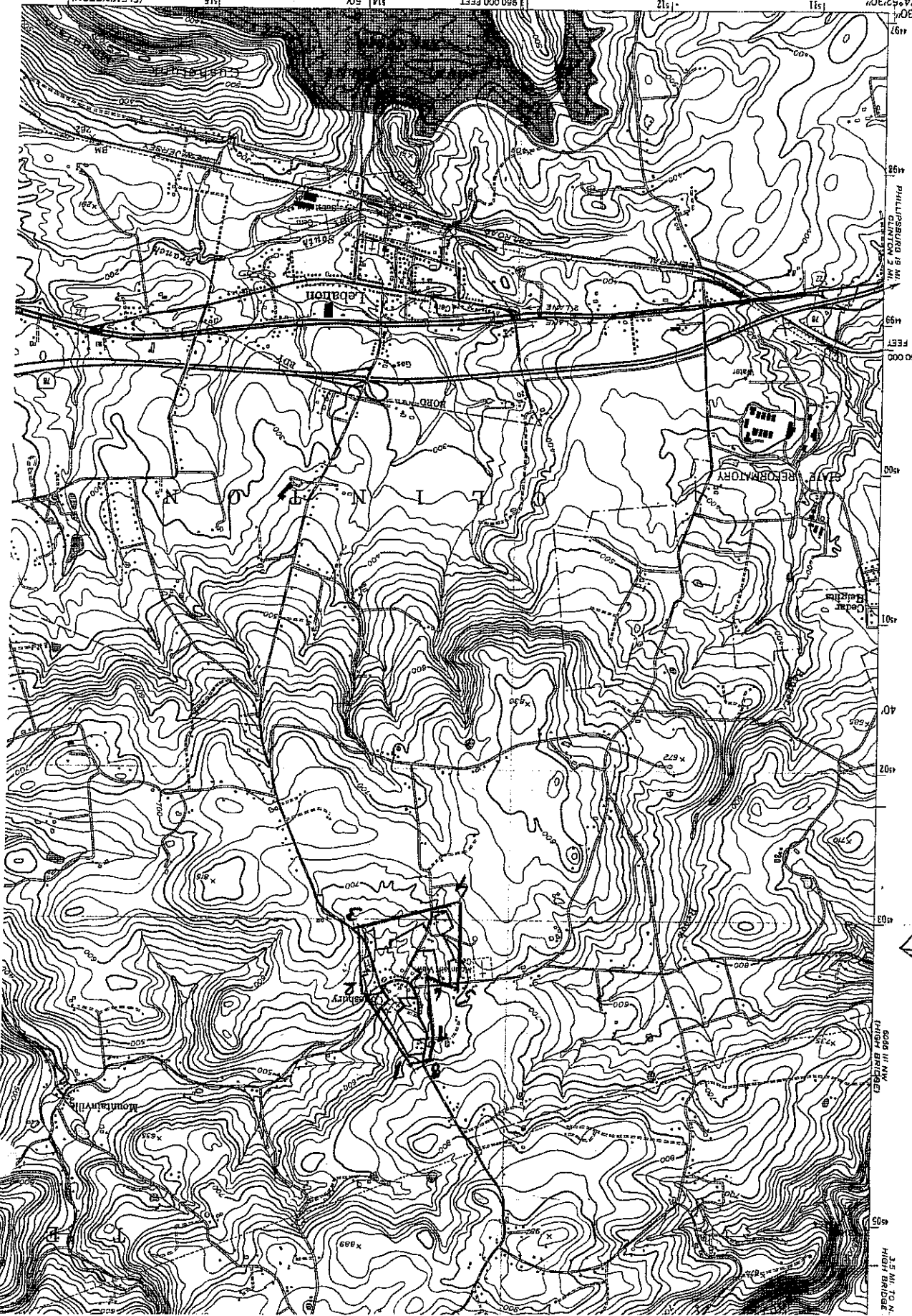
-  boundary
-  site number
-  non contributing
-  photo ID#; view direction

Scale: 1" = 50'

P175 TOWNSHIP
6065 11 SW

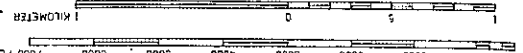
Mapped by the Army Map Service
Edited and published by the Geological Survey
Control by USCGS, USGS, and New Jersey Geodetic Survey
Topography from aerial photographs by stereophotogrammetric
methods. Aerial photographs taken 1942.
Contours revised by the Geological Survey 1954
Polyconic projection. 1927 North American datum
10,000-foot grid based on New Jersey coordinate system
1000-meter Universal Transverse Mercator grid ticks,
zone 18, shown in blue

UTM GRID AND 1970 MAGNETIC NORTH
DECLINATION AT CENTER OF SHEET
11.1
0.07
198 MILS
2 MILS
1000
0
1000
2000
3000
4000
SCALE 1:24,000
6065 11 SE
FLEMINGSTON



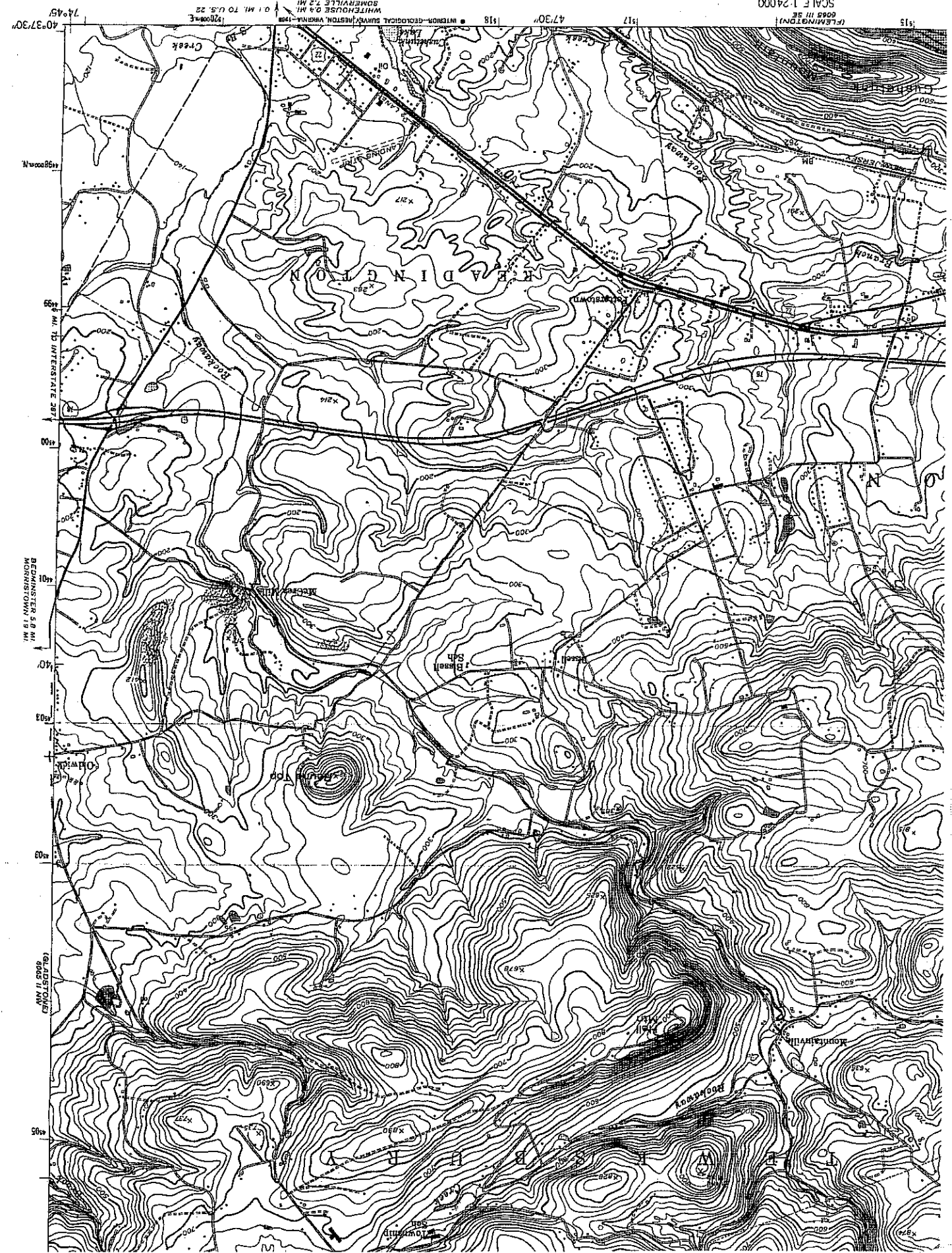
Cokesbury
Historic District
←

NATIONAL GEODETIC VERTICAL DATUM OF 1929
CONTOUR INTERVAL 20 FEET



SCALE 1:24000
1 MILE

ROAD CLASSIFICATION
Heavy-duty
Medium-duty
Light-duty
Unimproved dirt
U.S. Route
Interstate Route



40°37'30" N
40°45' N

74°45' W
74°55' W

19900000 N

19900000 N

19900000 N

19900000 N

19900000 N

19900000 N

19900000 N

19900000 N

BENNINGTON 5.8 MI.
MORRISTOWN 1.9 MI.

GLADSTONE
ROAD 11 NW

40°45' N

