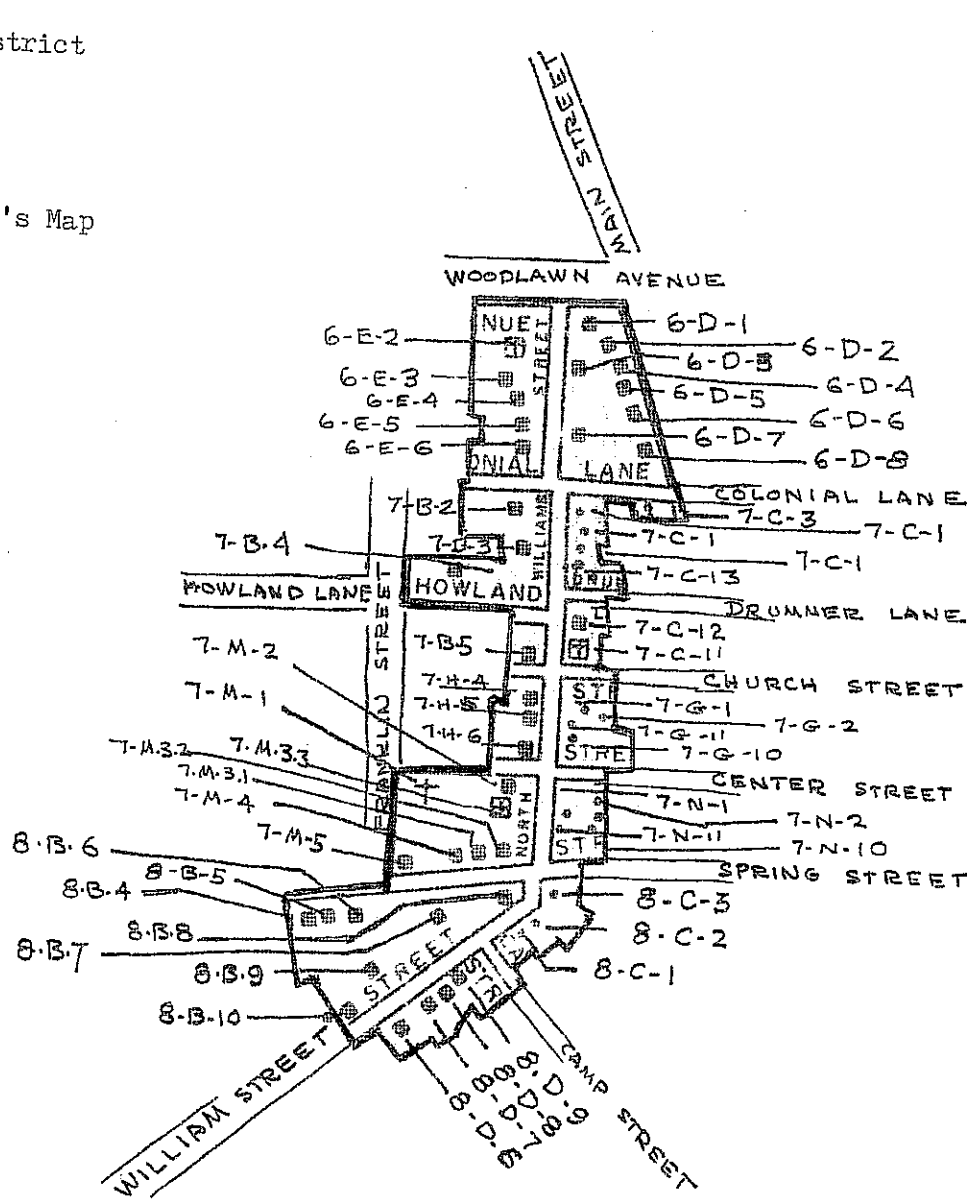


William Street Historic District
Tisbury, Massachusetts
County of Dukes County

Source: Composite Assessor's Map

Scale: 1" = 400'

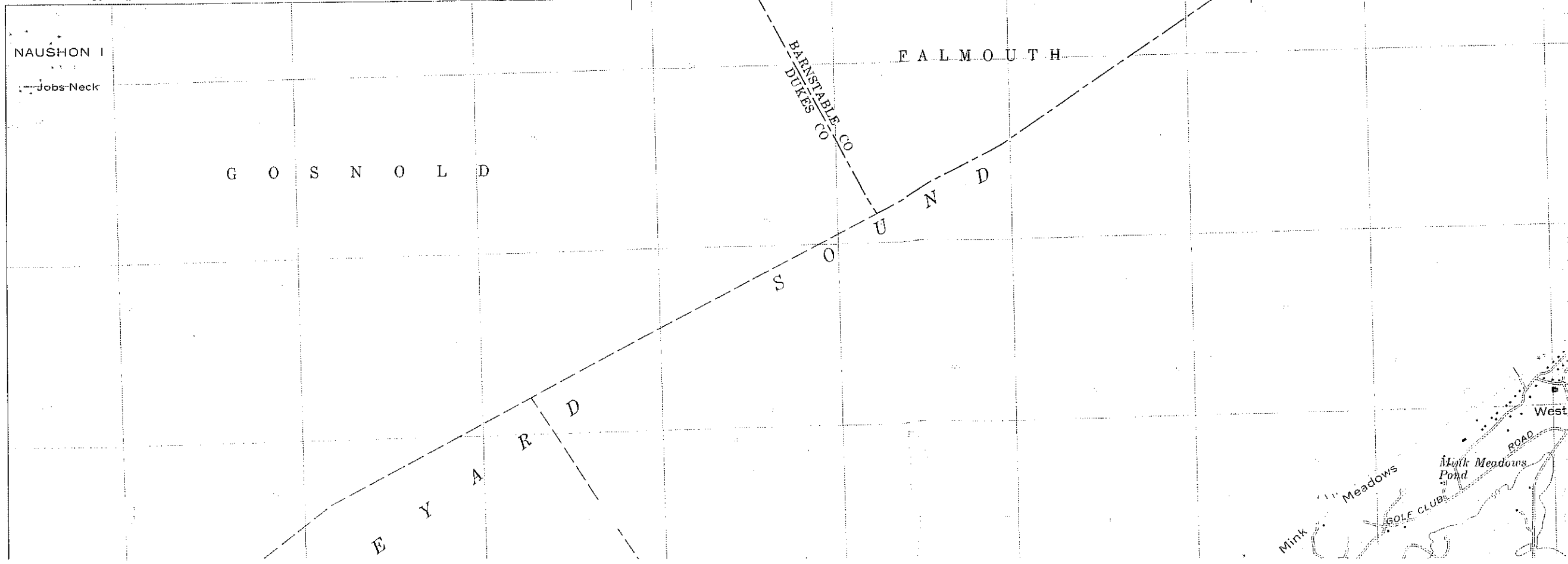
Date: 1976

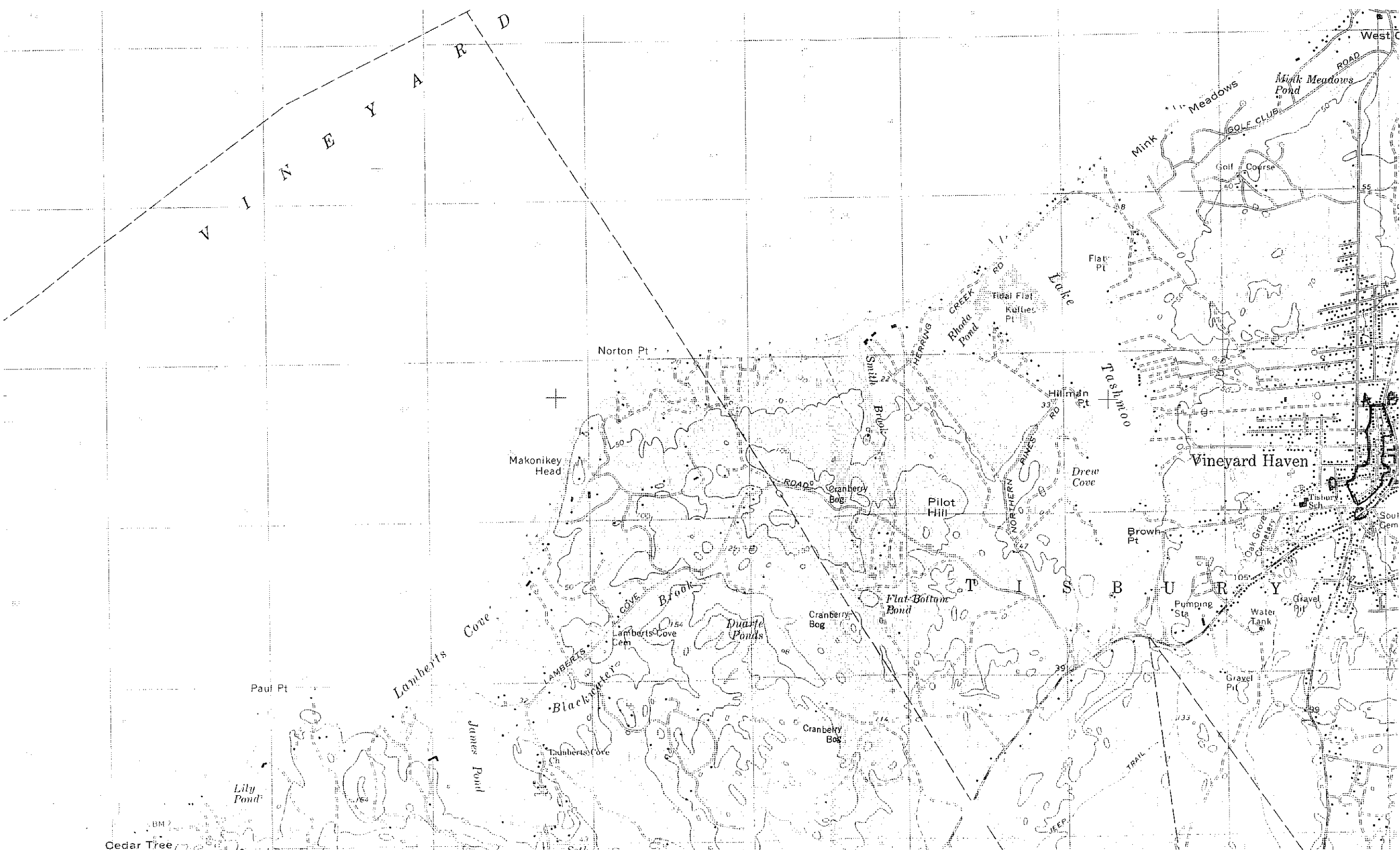


UNITED STATES
DEPARTMENT OF THE INTERIOR
GEOLOGICAL SURVEY

COMMONWEALTH OF MASSACHUSETTS
DEPARTMENT OF PUBLIC WORKS

37° 30" 159 000' E '59 '60 6867 II SW (WOODS HOLE) 40' '62 '63 '64 37' 30" '65 170 000 FEET (FALMO) 6867 II

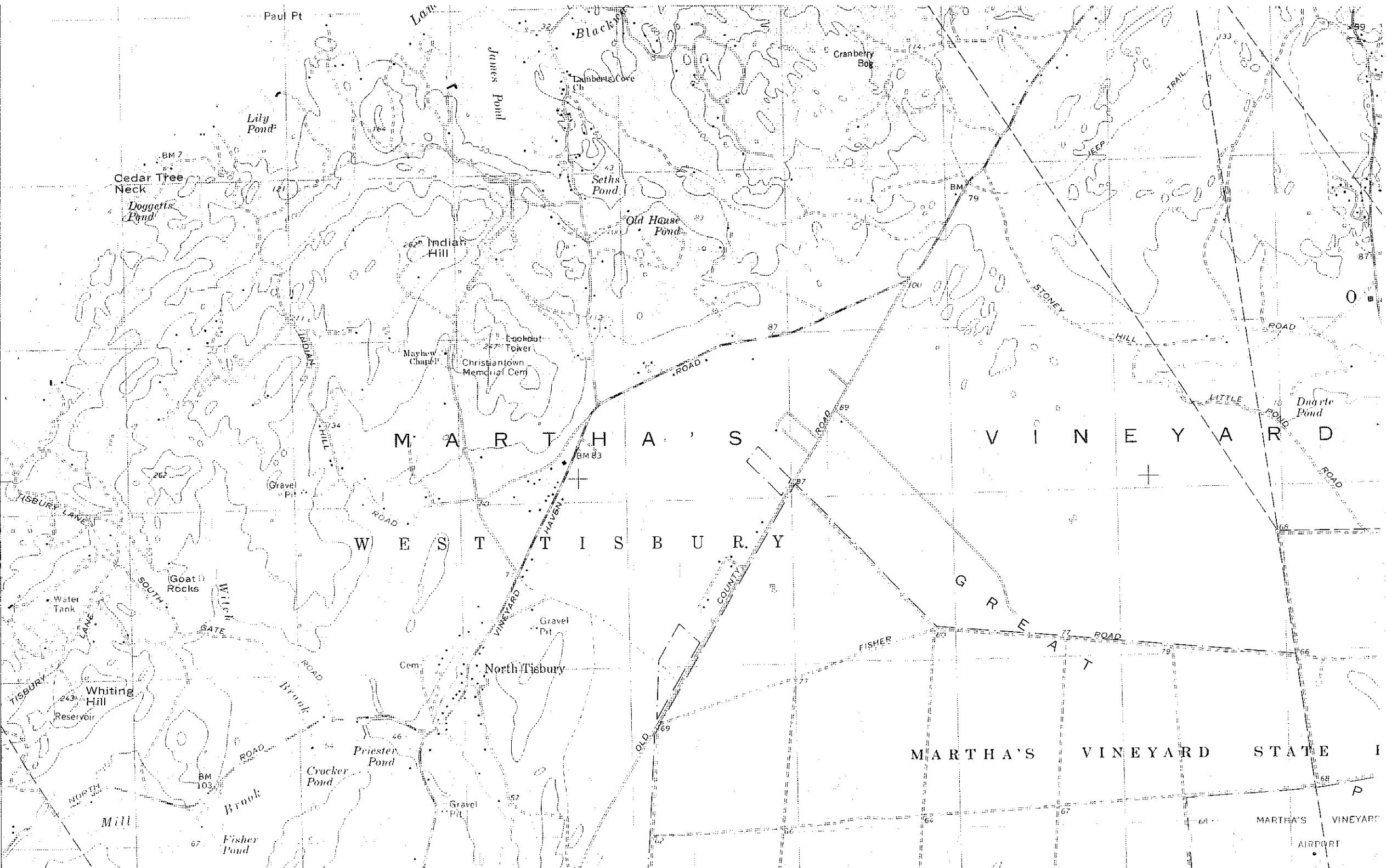




BM 7
Cedar Tree

489
488
487
25
486
485
484

6866 IV NE
(NAUSHON ISLAND)



M A R T H A ' S

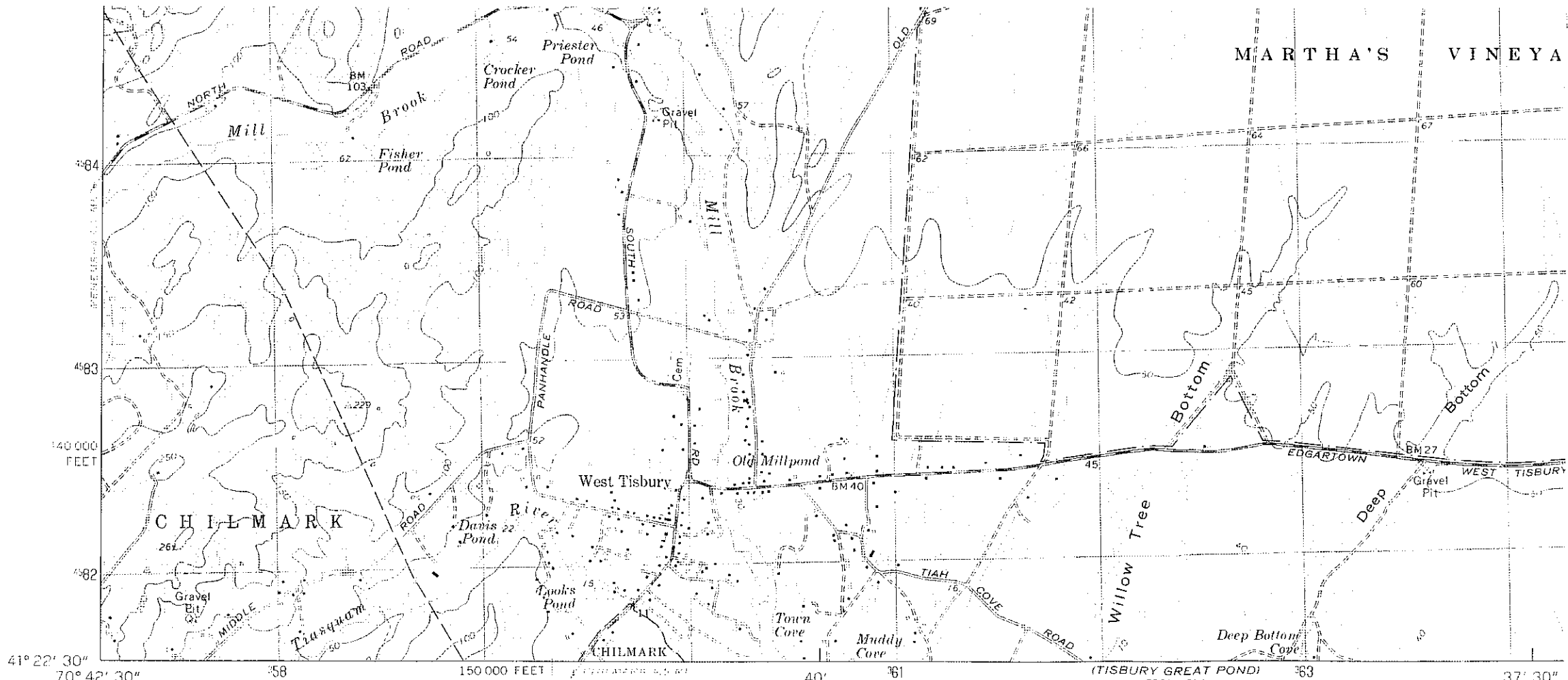
V I N E Y A R D

W E S T T I S B U R Y

M A R T H A ' S V I N E Y A R D S T A T E I

M A R T H A ' S V I N E Y A R D

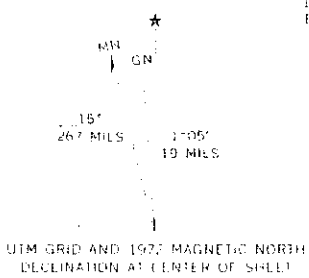
A I R P O R T



ISQUIBNOCKETT
6866 IV SE

Mapped, edited, and published by the Geological Survey
 Control by USGS, USC&GS, and Massachusetts Geodetic Survey
 Planimetry by photogrammetric methods from aerial photographs taken 1939. Topography by planetable surveys 1942. Revised from aerial photographs taken 1969. Field checked 1972
 Selected hydrographic data compiled from USC&GS Charts 260 (1971) 261 and 264 (1970), and 114SC (1972). This information is not intended for navigational purposes
 Polyconic projection 1927 North American datum
 10,000-foot grid based on Massachusetts coordinate system, island zone
 1000-meter Universal Transverse Mercator grid, zone 19

Boundaries in tidewater areas from information furnished by Massachusetts Department of Public Works



CONTOUR INTERVAL 10 FEET
 DATUM IS MEAN SEA LEVEL
 DEPTH CURVES AND SOUNDINGS IN FEET—DATUM IS MEAN LOW WATER
 SHORELINE SHOWN REPRESENTS THE APPROXIMATE LINE OF MEAN HIGH WATER
 THE MEAN RANGE OF TIDE IS APPROXIMATELY 1.8 FEET

THIS MAP COMPLIES WITH NATIONAL MAP ACCURACY STANDARDS FOR SALE BY U. S. GEOLOGICAL SURVEY, RESTON, VIRGINIA 22092
 A FOLDER DESCRIBING TOPOGRAPHIC MAPS AND SYMBOLS IS AVAILABLE ON REQUEST